

# NOC GEM & MINERAL SOCIETY NEWS

Vol, 27 No. 6

June 2008

## President's Message

*by Don Eschbach*

Hi Everyone,

Wow... what a fabulous turnout for the May 20 La Habra Chamber of Commerce Fund-raiser at Senor Campos Restaurant. Councilmen James Gomes did an outstanding job serving 19 NOC members dinner.

A big "Thank You" to Ofelia Warthen, Izzie Burns, Nancy Bird, and Kathy Eschbach for preparing and serving a great Breakfast to the "Good Morning La Habra" attendees on May 29. Don Warthen, Mike Beaumont, and myself gave a PowerPoint presentation on the insight into our club, the Jubilee of Gems Show, and the VIP Night. Don Ogden took pictures.

It's "countdown" to our June 6 VIP Night and June 7 and 8 Jubilee of Gems Show. With Don Warthen as our Show Chairman, and our outstanding Show Committee, this year promises to be the biggest and best show we have ever put on!

Under the magnificent leadership of Don Warthen, Show Committee members Ofelia Warthen, Don & Loretta Ogden, Bill & Izzie Burns, Jay Valle, Mike Beaumont, Richard & Yolanda Schirer, Frank Winn, Misha Farinech, Nancy Bird, Windi Erskine, and Don & Kathy Eschbach have put in endless hours of hard work to make this show the "crème de la crème!"

This is a club effort and my heartfelt "Thank You" to all members for their efforts, support, and enthusiasm as we continue to disseminate knowledge of mineralogy and the Earth Sciences' to the community.

## NOC Club Activities

Board Meeting — TBD

Field Trip — CFMS show — Jun. 27 - 29

Club Picnic — TBD

Deadline for NOC News — Aug.17.

## June Meeting

Date: June 10

Time: 7:00 p.m. Main Meeting

Place: La Habra Community Center  
101 W. La Habra Blvd.

Program: Our program for June 10 is Knife Making by Joe Girtner. Joe is a retired College Professor.

## Refreshments

Thanks to Frank & Kim Winn for bringing the goodies to the May meeting. Bill & Izzy Burns, and Julie will bring the goodies to the June meeting.

## Members in the News

HAPPY BIRTHDAY and have a wonderful day all of you who were born in June.

*Jerry Conley  
Janet Harvey  
Keith Higa  
Harry Howe  
Roger Loest  
Ken Marks*

Your gemstone is Pearl or Moonstone or  
Alexandrite or Agate  
Your flower is Rose or Honeysuckle

---

## Shows and Events

---

### **June 7-8 2008, La Habra, CA**

North Orange County Gem & Mineral Society  
La Habra Community Center  
101 W. La Habra Blvd.  
Hours: 9 - 5 both days  
Don Warthen (626) 330-8974  
Email: [warthen@earthlink.net](mailto:warthen@earthlink.net)  
Website: [nocgms.com](http://nocgms.com)

### **June 27, 28, 29 2008, Ventura, CA**

California Federation of Mineralogical Societies  
Ventura County Fairgrounds  
Hours: 10-5 Daily  
Bural LaRue (909) 874-5664  
Email: [bplarue@earthlink.net](mailto:bplarue@earthlink.net)

### **July 12-13 2008, Culver City, CA**

Culver City Rock & Mineral Club  
Culver City Veteran's Memorial Auditorium  
4117 Overland Avenue  
Hours: Sat. 10 - 6; Sun. 10 - 5  
Website: [CulverCityRocks.org](http://CulverCityRocks.org)  
Phone: (310) 391-8429  
Email: [maryellenandrick@aol.com](mailto:maryellenandrick@aol.com)

### **August 1, 2 & 3 2008, Nipomo, CA**

Orcutt Mineral Society  
St. Joseph Church  
298 S. Thompson Ave.  
Hours: 10 - 5 daily  
Wes Lingerfelt (805) 710-1983  
Email [Rocks4u@proigy.net](mailto:Rocks4u@proigy.net)  
Website: <http://www.omsinc.org>

### **September 13-14 2008, Downey, CA**

Delvers Gem & Mineral Society  
Woman's Club of Downey  
9813 Paramount Blvd  
Hours: Sat. 10 - 6; Sun. 10 - 4  
Guynell Miller (562) 633-0614  
Email : [guynellallen@sbcglobal.net](mailto:guynellallen@sbcglobal.net)

### **September 25-28 2008, San Bernardino CA**

Orange Belt Mineral Society, Inc.  
Western Region Little League Ball Park  
6707 Little League Dr.  
Hours: 9 a.m. - Dusk each day  
Emma Rose Couveau (951) 288-6182

### **October 11 - 12 2008, Trona, CA**

Searles Lake Gem & Mineral Society  
"66th Annual Gem-O-Rama"  
Searles Lake Gem & Mineral Society  
13337 Main Street  
Hours: Sat. 7:30 - 5; Sun. 7:30 - 4  
Bonnie Fairchild (760) 372-5356  
Email: [glgms@wvisp.com](mailto:glgms@wvisp.com)  
Website: [www1.iwvisp.com/tronagemclub/tronagemclub.html](http://www1.iwvisp.com/tronagemclub/tronagemclub.html)

### **October 18-19 2008, Whittier, CA**

Whittier Gem & Mineral Society  
Whittier Community Center  
7630 Washington Avenue  
Hours: Sat. 10-5 both days  
Jay Valle: (626) 934-9764  
Email: [res19pnb@verizon.net](mailto:res19pnb@verizon.net)

### **November 8-9 2008, Lancaster, CA**

Palmdale Gem & Mineral Society  
Antelope Valley Fairgrounds  
2551 W. Ave. H, Hwy 14  
Hours: 9 - 5 both days  
Susan Chassin-Walblom (661) 943-1861  
Email: [SLChaisson@yahoo.com](mailto:SLChaisson@yahoo.com)  
Website: [pgms@antelecom.net](http://pgms@antelecom.net)

### **December 13 - 14 2008, San Bernardino, CA**

Orange Belt Mineralogical Society  
Hernandez Recreation Center  
2nd & Siera Way, SB  
Hours: 9-5 both days  
Lyle Strayer (909) 887-3394

---

## Secrets

---

by Loretta Ogden

I can hardly wait till Friday night too see what prizes everyone is donating for the Donation Awards. I do know some and they are fabulous.

We have a reputation to live up to at NOC. We have always had lots of prizes of great quality, and especially things that either compliment our hobby or are made by one of our own.

Please bring your donation to me as soon as possible on Friday. We need to have the Donation Awards set up for the Friday night VIP. Thanks ahead of time I know you will all make us proud.

Now lets go out and do the best show ever.

---

## Pearls Gemstone of the Month for June

---

by Ofelia Warthen

Ref.: Gemstones of the World by Walter Schumann

The derivation of the name is uncertain but may be from a type of shell (Latin – *perna*) or from its spherical shape (Latin – *sphaerula*). Pearls are produced by mollusks, rarely by snails. They consist of mother-of-pearl, which is mainly calcium carbonate (in the form of aragonite) and an organic horn substance (conchiolin) which are formed concentrically around microcrystals. Although the Mohs' harness is only 3 to 4, pearls are extraordinarily compact and it is difficult to crush them

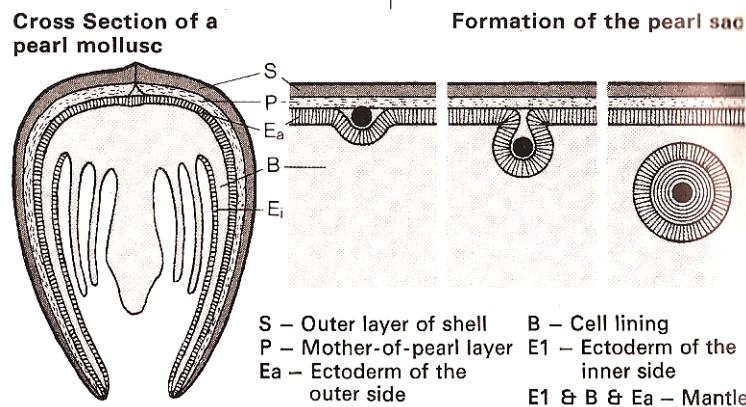
Pearls have been regarded as one of the most valuable gem materials. They have been used for adornment for over 6000 years. In 2500 BC, there was a substantial pearl trade in China. Pearls are also popular because they do not require any processing. In their natural state they show their full gloss, the desired luster.

Seventy percent (70%) of all pearls are strung and worn as necklaces. Pearls are either matched for size to make a necklace or are graduated in size with the biggest in the middle and smallest at the ends. The careful selection of the pearls for a necklace of collar is done by eye.

The pearl is valued according to shape, color, size and luster. The most valuable is the spherical shape. Half-spherical pearls, or those flattened on one side are called bouton or button pearls, irregular pearls are baroque pearls. Pearls worn down in a necklace become barrel shaped.

The word "pearl" without addition should only be used for natural pearls. Cultured pearls must be designated as such. The increase demand for pearls has led to their cultivation in large quantities. Such cultured pearls are not imitation, but a natural product which has been produced with man's help. Today cultured pearls amount to 90% of the total pearl trade.

The principle behind pearl culturing is simple. Man caused the mollusc to produce a pearl by insertion of a foreign body (see Formation of the pearl). In China as early as the 13th century, small leaden figures of Buddha were fixed to the inner wall of a mollusk shell so that they would be covered with pearl material. Round pearls were first produced by the Swedish naturalist, Carl V. Linne, in 1761. In 1893 the Japanese, K. Mikimoto, managed to produce semi-spherical pearls.



---

## NOC General Meeting Minutes La Habra Community Center May 13, 2008

---

*by Jay Valle, NOC Secretary*

**Call to Order:** President Don Eschbach called the meeting to order at 7:00 p.m., followed by the flag salute.

**Membership:** The meeting was attended by 23 members and 1 guest.

**Program:** Marc Willis, Geology Instructor at Fullerton College, presented a program on the Rancho La Brea Tar Pits.

<Break & Drawing>

**April Minutes:** There were no changes to the April Minutes so they will stand as read.

**Treasurers Report:** Don Warthen gave the Treasurers Report. There were no corrections so they will stand as read.

**Field Trips:** Jay Valle informed the members present that the club field trip was to Castle Butte the weekend of April 26-27. It was attended by 3 NOC members. The next field trip is scheduled for Saturday, May 24 (Memorial Day Weekend) and is to the Blue Lady and Himalaya Tourmaline Mines.

**Federation Report:** Loretta Ogden reminded us that the CFMS Show was coming up in Ventura the last weekend in June. Loretta will put in the NOC Club case at the show so you need to give her your items to display right after the NOC Show. If you are interested in a bus trip to the CFMS show call Izzy Burns, if you want to know about the train (Amtrak) call Nancy Bird, and if you want to carpool - call each other. Nancy Bird mentioned that Walt Wright is going to have his petrified wood on display at the show and will be doing a presentation. There will be several lectures, including a presentation by Mike Beaumont. Hotels are nearby and camping will be at the fairgrounds (info is on the Federation website).

**Librarian:** Ofelia - We have books, videos and DVDs.

**Programs:** Joe Girtner will be back to talk about either "Cogs" or "Knives".

**Refreshments:** Kathy Valle thanked Frank & Kim Winn for bringing the snacks. The June refreshments will be courtesy of Bill & Izzy Burns and Julie.

### Show Report:

- Don Warthen passed around a sign-up sheet for food at the Friday Night VIP Mixer (Gala).
- Don handed out copies of the Show Committee/Setup Schedule.
- Help is requested for the Thursday morning "Good Morning La Habra" event, hosted by NOC. Don Eschbach, Mike Beaumont and Don Warthen are doing a presentation. Ofelia Warthen and Izzy Burns are doing the breakfast and they could use some help. NOC members are requested to come to show as big a "presence" as we can. The event starts at 7:30 a.m. and we need to be at 6:30 a.m. to set up the kitchen.

### Show Schedule Please Read

- Friday morning, Don Eschbach will pick up the truck at 7:00 a.m. The warehouse group is to meet at the Club storage at 7:30 a.m. to load the truck and the table skirting crew needs to be at the Community Center by 8:00 a.m. Dealers are scheduled to start setting up at 11:00 a.m. We will start setting up the VIP Mixer at about 2:30 to 3:00 p.m. and will open the "VIP" at 5:00 p.m. to Chamber members. We will also start a special silent auction at 5:00 and it will close at 6:45 p.m. Shortly after the silent auction closes, we will have a drawing for 2 or 3 items, using our regular show raffle tickets. After the drawing, these tickets will be added back into the regular show raffle basket
- Sunday, after the show, we have to take everything down and put it all back into the truck. The truck will be parked at the Community Center until Monday Morning.
- Monday morning at 8:30 a.m. a crew is needed to follow the truck over to the storage facility and help stow the items into the warehouse.
- Mary Ruiz sent out letters requesting donations for the show and has received some responses. Donations include free services at a chiropractor, 2 theater tickets, four \$25 gift certificates to Wal-Mart, and BJ's Antiques donated 2 bottles of wine. Loretta Ogden asked for donations from members.
- More rock is needed for the spinning wheel, pachinko machine and silent auction.
- Need hand-crafted items for the Donation Awards - we have the large geode as the main prize (25" tall).

## NOC General Meeting Minutes (*continued*)

- NOC patches are available; members are encouraged to wear shirts with the NOC patch.
- Don Ogden and Richard Shirer are scheduled to stay over on Friday night and Frank Winn is signed up for the Saturday night shift. A security person is still needed to spend Saturday night at the Community Center with Frank (Randi Hitrick volunteered).

**Social Secretary:** Nothing to report.

### **New Business:**

- Fran Swanston brought in several shirts which could be used with the Club Patch at the show. A tan shirt from Penny's cost \$30. The same or similar shirt cost \$29 at the Bass Pro Shop with a long-sleeve version going for \$34. They also have orange shirts for \$29. There was discussion as to if we wanted a uniform look. Izzy Burns suggested that if you decide to wear an orange vest that a dark or beige shirt would be best. Vests can be purchased from Big 5. Don't forget to wear your NOC name tags.
- Don Eschbach asked members to pick up more flyers and hand them out to promote the show..
- Frank Winn said that there is nothing to report yet on the La Puente funds.
- The annual Chamber event at Senor Campos is on May 20th at 5 p.m..

Meeting adjourned at 8:58 p.m..

---

## Side Trip

---

*by Don Ogden*

After the Boron field trip, we took a side trip to the Mojave Airport. Below you can see Pat Mogan being dwarfed by the giant wind turbine blades. At the right is my favorite aircraft, L1011.



---

## June Field Trip CFMS Show at Ventura June 27 - 29, 2008

---

*by Jay Valle, NOC Field Trips*

*The following information was provided courtesy of Dave Kelty. Maps to these locations will be available at the regular NOC June meeting.*

For June, our field trip will be to the CFMS show in beautiful Ventura. This is a three day event beginning on the 27th. Ventura is less than a two hour drive from Pasadena so I am passing on a nice opportunity for your family and friends to collect in three of my favorite locations in and near Ventura. Just a few miles south of Point Mugu some of the rip-rap used to widen PCH many years ago is a nice brown to black coquina with white shell pieces in it. This coquina takes a nice polish and makes a beautiful cabochon or sphere. Some refer to it as "luckyite"

On the beach just north of the state beach in Ventura, there are beach rocks that contain agate, onyx, jasper, travertine, whale bone.

Just before Carpinteria, north of Ventura, you will find a fossil area with billions of tiny fossil shells. They can be made into ear rings, bracelets etc. It is ideal for children to find the shells. This location is on the off-ramp to Hwy #150 from Hwy #1 so park in a safe location and watch out for traffic. Note: this location is in Mitchell's Gem Trails for Southern California. For more info contact me at [davidkelty@juno.com](mailto:davidkelty@juno.com).

Have a nice safe trip and see you in Ventura.

\*\*\*

# My 84<sup>th</sup> Birthday

*by Joan Abramson*

I've climbed many places --- clear to the top!  
Afraid to look down because of the drop.  
The Statue of Liberty's torch beckoned me.  
I mounted the stairs, New York skyline to see.  
The Arches in Utah with vibrant allure-  
What a challenge to climb, though I felt insecure!  
Ayers Rock in the outback of Aussie's acclaim:  
I maneuvered high curves and then added my name.  
The Tower of London wasn't so steep,  
But the dungeons and tortures just made the flesh creep!  
The crown jewels were awesome --- a rock hound's true dream  
To see all the gemstones in settings supreme.  
The quaint Leaning Tower of Pisa you know  
Didn't come with guard rails --- my descent was quite slow.  
The Great Wall of China I walked with delight.  
A mile sufficed, the end not in sight.  
Ancient Greece ---- Santorini of volcanic past,  
Thousands of steps so the hike wasn't fast.  
Chichen Itza had steps that were really so small  
I sat for descending, afraid I would fall!  
The dark inner passage led up to a god  
With eyes made of emerald --- it wasn't a fraud.  
Machu Pichhu, mysterious, Inca-hewn stones—  
But too many steps for my elderly bones!  
Unknown for so long, the jungle concealing,  
Now too many tourists for a mystical feeling!

In places I didn't physically climb  
I took elevators --- it saved so much time!  
In Paris the grand Eiffel Tower was fun,  
The ride to the top at a speed that would stun!  
The Empire State Building given its due,  
And Chicago's Sears Tower with magnificent view.  
Seattle's Space Needle ---- oh, what a surprise  
A rain-free clear vista had welcomed my eyes!

And now far-flung roamings have come to an end.  
Less arduous travels are now my new trend.  
My steps are less steady, heights beckon no more,  
But I welcome small obstacles hate has in store.  
Smooth pathways are boring ---- they haven't much zest.  
When my road becomes level, I'll court final rest.  
It's fun to look back at the times that have gone,  
But I look to the future ----- each day's a new dawn.

# Good Morning La Habra



# Boron Dry Lake Field Trip April 25-27, 2008

