

NOC GEM & MINERAL SOCIETY NEWS

Vol, 24 No. 9

November 8, 2005

President's Message

by Nancy Bird

Happy November!

Gads- only 1 1/2 more months to Christmas.

At this month's meeting we will accept nominations from the floor and vote. (See page 8 for nomination committee report.)

Following the election, we will hold our annual auction. Remember to bring items you want to auction. We have always had a great time and this year should be no different and lots of fun.

There will be a board and show meeting on November 2, at the La Habra Community center at 6:00 p.m. Be more involved - it's more fun!

Trini has been working towards making our Christmas Dinner and party very memorable. I hope you all will come.

Our Christmas Party/Installation will be on December 9 at the La Habra Community center with the social hour at 6:00 p.m. Call Don Warthen or myself to insure your reservations. The information is on page 5 of the newsletter.

Remember, bring your food contributions for the needy and new unwrapped gifts for children to the Christmas Party.

I hope you can all turn out for the November meeting when we vote for officers for the new year.

Program

At the Nov meeting - Elect your 2006 officers. Bid at our auction. Also to bid, bring money, that's the same as chash.

Members should bring Rocks, finished projects, etc. to donate for the auction.

NOC Club Activities

Board Meeting — To be announced

Field Trip —

CFMS Annual Thanksfiving Field Trip to Willey Wells - Nov 23-27, 2005.

and CFMS Annual Field Trip to Gold Rock Ranch - Dec 2-4, 2005.

(See Don Eschbach or Jay Valle for info.)

Show — June 3-4, 2006

Next Show Meeting — Nov 2, 2005 — 6 p.m.

Deadline for NOC News — Nov 17

Christmas Party/Officers Installation — Dec 13

November Meeting

Date: November 8

Time: 7:00 p.m.

Place: La Habra Community Center
101 W. La Habra Blvd.

Refreshments

Don and Ofelia Warthen will bring the goodies for the November meeting. Thanks to Pat Felix for bringing the goodies to the October meeting.

Members in the News

HAPPY BIRTHDAY and have a wonderful day all of you who were born in November.

Jane Livezey

Jerry Grafton

Your gemstone is Topaz

Your flower is Chrysanthemum

Shows and Events

via Internet

November 12-13 2005, Lancaster, CA Palmdale
Gem & Mineral Club
Lancaster Fairgrounds
2551 west Ave. H
Hours: Sat. 9 - 5; Sun. 9 - 4
John Martin (661) 916-9479
Email: pgmc@antelecom.net

November 19-20 2005, Victorville, CA
Victor Valley Gem & Mineral Club
San Bernardino County Fairgrounds
4800 Seventh St.
Hours: Sat. 9 - 5; Sun. 9 - 4
Mavis Mushaney (760) 241-8282

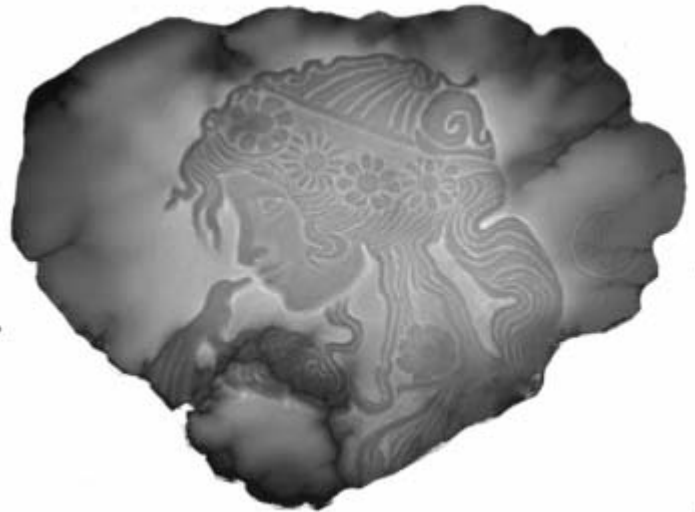
November 26-27 2005, Barstow, CA
Mojave Desert Gem & Mineral Society
Barstow Community Center
841 South Barstow Road
Hours: 10-5 both days
Bob Depue (760) 255-1030

March 4-5 2006, Arcadia, CA
Monrovia Rockhounds, Inc.
LA Co. Arboretum & Botanical Garden
301 North Baldwin Ave.
Hours: 9 - 4:30 both days
Janie Duncan (626) 358-8151

March 11-12 2006, San Marino, CA
Pasadena Lapidary Society
San Marino Masonic Center
130 Hunting Drive
Hours: Sat 10 - 6, Sun 10-5
(626) 355-6964 or (626) 914-5030
Todd Neikirk (323) 256-4992

June 3-4 2006, La Habra, CA
North Orange County Gem & Mineral Society
Jubilee of Gems Show
La Habra Community Center
101 W. La Habra Blvd.
Hours: 10-5 both days
Don Warthen (626) 330-8974
Email: warthen@earthlink.net

June 9-11 2006, Angels Camp, CA
CFMS Convention and
Calveras Gem & Mineral Society Show
Calveras Co. Fairgrounds
Hours: 10-5 daily
Website: calaverasgemandmineral.org



November Auction

by Don Warthen

We will be holding our annual auction at our November 8 meeting. Everyone should have a fun and exciting time. This auction will be both a live action auction and a silent auction; we need your donations to make this an enjoyable event for all.

Please mark your items with a starting bid to help our inspiring Auctioneer know where to start.

NOC General Meeting Minutes - Oct 11, 2005

by Susan Hansen

The meeting was called to orders at 7:07 p.m. by President Nancy Bird, who led the flag salute.

Loretta introduced the **Speakers: Maralisa Van Andell and Dirk Rassloff** of GlaxoSmithKlein Pharmaceuticals, who presented the program on Medications, pharmaceutical development and the new Medicare Prescription Options that will need to be decided/chosen early next year by those over 65. They also gave information on programs to assist under 65 low-income patients get reduced costs on their medications: GSK patient assistance program – Bridges to Access (www.BridgestoAccess.gsk.com), for under 65 patients, www.togetherRxaccess.com, and other patient assistance programs (www.pparx.org).

Refreshments were served by Pat Felix.

Door Prize raffles were conducted by Loretta.

Izzy & Bill have the **books for sale** for the club at discount at the back table. Members agreed that Izzy & Bill can take them to the Whittier Club show this weekend in place of the Whittier books that haven't arrived yet. Whittier will replace ours when theirs come.

Business meeting - Reports:

Membership: 20 members & 2 guests present.

Minutes were in the bulletin. Izzy made one correction: class card is \$25 for 12 classes or workshops.

Nov 1st will be a workshop open house at the Ogden's.

Treasurers' Report given by Don Warthen, summary sheet available. Requesting suggestions for fund-raising projects.

Secretary –mail includes upcoming shows: Rock Chippers in West Hills on 10-15. Whittier Show this weekend Oct 15 & 16. Also a request for donations from La Habra High School.

Show report by Don Warthen. They had a show meeting, another meeting TBA, possibly with board meeting. Ofelia will be taking care of the dealers, Don E. will do Demos. Show moved back to 1st week in June & will conflict with Goddard again. So may have to tell people to bring their own cases. Need to find out how many members have cases and maybe extras. We will try and get a pattern, Izzy suggested - look at hers at the Whittier show, she has two kinds that fold up. One is a CFMS "standard" case, the other from Northern California. We could get a patterns from them. We want to expand the show, add rooms, have more activities, more museum type exhibits, maybe short classes. It was recommended we move Walt Wright back into main room. Chalmer mentioned that the spinning wheel tray is coming apart. Don W. has it at home and will make another one.

Displays – Don E. brought some nice rough and polished specimens. Chalmer brought Brazilian Agate slabs, cut and polished for clock faces. Don W. brought some pictures from Camp Paradise, and passed around a self-collected Amethyst that he faceted and set up there. They are changing the lobby display area, it was suggested we put a new display in, someone suggested Chalmers' slabs.

Federation Report from Loretta. Beginning of November the Federation Business meeting will be back in Visalia, she brought a copy of the October newsletter with her article on How to double your Profit and make new friends.

AFMS Newsletter had an article that members should be writing the articles and not the editor. Don doesn't mind putting it together but is tired of the printing, and folding and posting and mailing. Volunteers are welcome, even it change off frequently.

Nominating Committee: Loretta reported on the committee meeting and presented the slate:

2nd VP : Don Eschbach

Secretary: Pat Felix.

Directors: Ofelia, Floyd, Kathy E.

Next meeting can take nominations from floor, before the election.

Field Trips report by Don Eschbach.

Oct 22 – 24 with the Whittier club at the Honey Onyx Claim. Jay Valle will be the leader, going after red moss agate, honey onyx, jasper, palm wood.

Oct 26th – GIA lecture 7 p.m. at the museum.

Nov 23-27 trip to Wiley's Well. led by Bob Fitzpatrick.

Dec 2-3-4 CFMS trip to Gold Rock Ranch, collecting, no tailgating.

Chamber news: Don received a letter/invitation for Open House for the new Costco 10/25 6-8 p.m., grand opening will be 10/26.

Christmas Party – Trini is chair, being finalized, details will be available next meeting.

Librarian- Pat will be getting copies of the books for the library: Gem & Lapidary Minerals; Gemstones of North America; Photographing Minerals.

Programs – November will be an auction and elections. Business meeting first, then the auction. Bring items.

Refreshments next month: Don & Ofelia.

Old Business – Ginny will be going to Brenda Gomez' class for a geology session, and after Christmas to another school in Orange County. Ginny also gave a report on Jerry who was hospitalized for 5 days, home now.

New business – Fullerton Arboretum having a California Native Plant sale this weekend.

The meeting adjourned at 9:06.

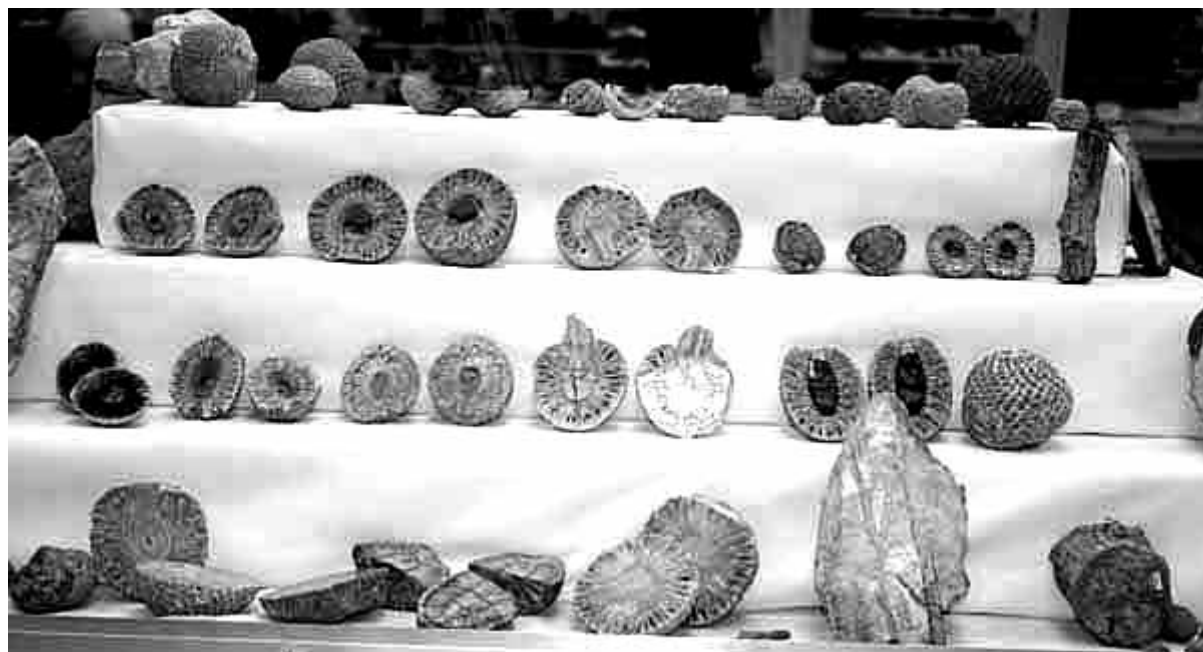
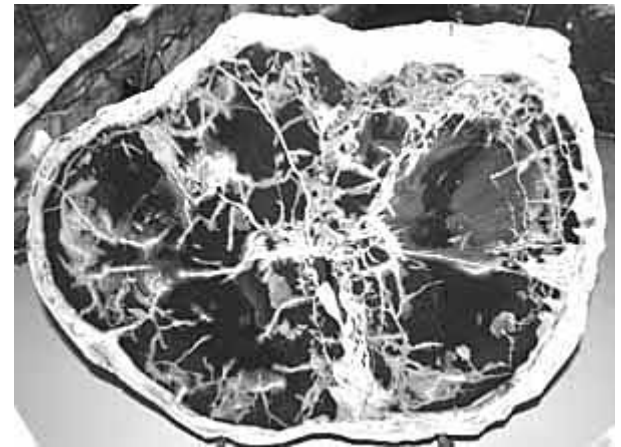
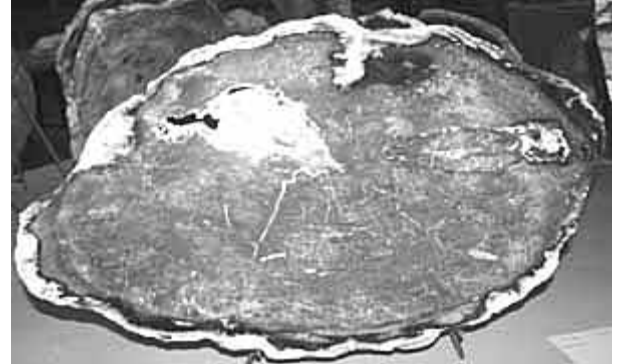
Petrified

by David Zinedell

Once beloved, you were alive, You were rings of cellulose singing with sap, quivering with purpose, delighting in being but unaware of your own delight. The tree of which you were a part stood alone on winter nights shimmering in the moonlight. What was your color? Ivory? Cherry? Ebony? Enclosed in bark, with no living eye to behold you, what sense even to say you had a color? Did you even care:

You lived almost forever, but then you died. You lived long, long ago, so there were no chainsaws or pulp mills for you. Neither were you made into a frame to bring a little life to dead, pretentious paintings. You didn't rot. Time preserved you. Time transformed you, a bit of silica replacing fiber, trickles of hematite and cobalt dissolving your cells and preserving them so vividly and indestructibly. A time came when you glowed with colors: russets and teals, flecks of black embedded in white, roses and greens and golds. You were a glory of the earth but you remained yet unaware.

Now, beloved, you are still alive. Your heart is stone, but what marvelous stone! My heart beats more delightedly to behold you. My eyes has framed you. In a different way - neither lesser nor greater - you live again and forever.



Christmas Party

by Nancy Bird

The Christmas Party will be **December 13** at the **La Habra Community Center: social** at 6:00 p.m. and **dinner** at 7:00 p.m.

Trini has found a great Mexican restaurant to cater our dinner. It will be buffet style this year put together by Mexico 1900 in La Mirada. There will be salad, chili rellenos, chicken enchiladas, picadillo, rice and beans, and those fabulous cheesecake.

There will be prizes and a Christmas game, and installation of officers. There will be punch, coffee, and tea.

Bring your food contributions for the needy and new unwrapped gifts for children to the Christmas Party.

The cost will be **\$10 per person**-please send your checks to Don Warthen asap. Make checks payable to NOC Gem & Mineral Society.

Don Warthen
15455 Tetley Ave.
Hacienda Heights, CA 91745

Carving Alabaster

*Information flyer from the Gem Carvers
Guild of America
via The Pegmatite Oct/05*

Listed at 2.1 on the Mohs Scale, alabaster is a soft gemstone of the gypsum family. It is carved more easily than many woods and finishes to a beauty that compares with marble. Weighing about 137 pounds per cubic foot, it has a very high water content, and comes in translucent and opaque colors of white, tans, pinks, and oranges.

Almost any abrasive material will carve alabaster. It can be carved with steel tools, saws, files, sandpaper, and even some woodworking chisels and dental tools. Motorized tools may be used to speed the work, but a light touch is necessary due to the softness of the material.

Sculptor's chisels, coarse-toothed rasps, gouges, and hack saw blades all work well on large objects. Wood rasps are very versatile tools which will quickly remove level broad areas. Hack saw blades not only saw well, but also make excellent flexible scrapers. Drills, hole saws, rotary files, and cutters are all very useful. A curved-tooth file is good for removing marks, and saves much sanding time.

Smaller carvings can utilize fingernail files, nails, X-acto knives, razor blades, and dental scalers, etc. A pencil, a piece of wood, bamboo, or even a toothpick with sandpaper wrapped around it does very well in those tight little places. Dental tools work extremely well in these spots.

For sanding, use steel wool, sandpaper, emery cloth, fine files, or even a tooth brush. Water should be used to keep down the dust, especially if motorized tools are being used.

Almost any polishing agent on a soft buff or leather will work. A paste of water and tin or cerium oxide on a chamois or soft cloth will give an attractive finish following a fine sanding. Buffing with a fine abrasive in oil or water brings a good polish, as will scrubbing with damp sand. After washing the carving, apply several coats of wax, rubbed on and then polished with a soft cloth.

Caution should be used with translucent material. If overheating is caused, the material will turn irreversibly opaque. Therefore, the use of water is advised when using motorized tools.

Alabaster is well-suited to lathe work in making bowls, goblets, etc., in addition to general carving of any type.

Untried Shop Tips

(from Gerry Blair in Rock Talk, via Rock Rollers 06/97) via The Pegmatite Oct/05

Do's and Don'ts of Dopping - Don't get the wax smoking hot, as it will weaken. Melted, most of the time, is plenty good enough. Clean the preform and the dop stick before applying wax to remove oils and greases. A better bond is the reward. Big monstrous cabs need big monstrous dop sticks. Be generous with the wax. You will profit in saved stones. Avoid heat build-up during buffing.

2006 Show Report

by Don Warthen Show Chairman

It is that time again, to start thinking about the show for next year! I have agreed to act as chairman again this year. We held our first show meeting on September 27. The show is off to remarkable beginning.

We have some of the committee chairpersons in place. Ofelia will be Dealer Chairperson, Don Eschbach will be Demonstrator Chairman and Janis Lodgas will be Youth Activities Chairperson. As you can see we still need a lot of help, so if you want to be on a committee don't wait to be ask, just give me a call.

Because of the CFMS Show, we had to move the show from the 2nd weekend to the first weekend of June 3rd & 4th. The City will be working with us again this year and have the Community Center reserved. We are planning some new activities for children and adults alike last year. Also think about a show theme and give us your ideas and suggestions at the next meeting.

It may be necessary for each of us to furnish our own Show Cases this year and if you want to build one, there will be plans available.

There will be a show meeting scheduled later this month, will be announced at the general meeting.

What Makes Silver Tarnish

*from Chips & Tips, via Ghost Sheet 12/96
via The Pegmatite Oct/05*

Silver does not oxidize, or "rust", on exposure to air. Compared to most other elements, it is not particularly reactive. It does react with sulfur or sulfur compounds, like hydrogen sulfide in the air, forming tarnish – a compound that is chiefly silver sulfide.

Silver is also tarnished by many sulfur-containing organic compounds, including proteins like the albumin in egg whites. A threat to the family silverware is posed by rubber bands, which are vulcanized with sulfur compounds.

Tax Advisor News

by Mike Kokinos, Tax Advisor

REGISTRY OF CHARITABLE TRUSTS:

Within the California Attorney General Office, there is a unit called the Registry of Charitable Trusts. It is the job of this unit to keep track of all organizations whose assets in the event of dissolution must go to another charitable non-profit organization. The unit also audits organizations to ensure that excessive compensation is not paid and that expenditures support the primary purposes of the organization.

In the past couple of months, I have had contact with three societies that have not registered with the Registry of Charitable Trusts. All societies exempt from tax under Section 501(c)(3) or 501(c)(4) should be registered and have been issued a CT number. The Registry has been lenient in accepting current registration for organizations that should have registered a few years ago.

If your society does not have a CT number and/or has never filed the Form RRF-1 with the Attorney General, I cannot emphasize enough the need to do so. The process and forms needed to register can be found on the Attorney General website (caag.state.ca.us). Recently a \$25.00 fee for the initial filing of the Form RRF-1 was implemented. I recommend the completed Form and the \$25.00 fee is included with the registration package. I will be pleased to assist any society in preparing the package or answering questions.

IRS ISSUES:

The Internal Revenue Service sponsors a nationwide tax forum every year. This September four of the 21 seminars involved non-profit organizations. Discussions were held on the preparation of Form 990 and the new Form 1023 (application for charitable tax exemption). The most informative part, for me, was discussions with the IRS presenters after the sessions.

They reinforced the need to file Form 990 or 990EZ if the Service mails you the forms even though gross receipts are less than the \$25,000 threshold. The presenter confirmed that about half the forms 990 filed are prepared incorrectly.

For those societies desiring to change from the current exemption, (many societies have 501(c)(4) exemption) to 501(c)(3) the Form 1023 application for exemption in most cases is now easier to prepare. I have recently assisted two societies in the preparation of the new form. I believe the form puts emphasis on compensation of directors, officers, members and contractors and fund raising using professional organizations. To the best of my knowledge neither of these issues affect our societies. Some of the questions try to ensure that the operations do not have inurement issues.

An Important Letter from Our Insurance Broker

by *Patt McDaniel, McDaneil Insurance Service*

Dear CFMS Members,

As many of you now know, McDaniel Insurance Services has taken on some new responsibilities on behalf of CFMS and we thank the many wonderful members who have worked with our office to make the transition go smoothly!

We are now working directly with the member clubs and societies to schedule coverage for premises liability. We also are working with the clubs and societies to add optional coverage such as property coverage and the new Directors and Officers Management Liability coverage. As is the past, we will continue to serve your needs for certificates of insurance and the adding of coverage for events that will have 300 or more in attendance. Details of all the coverage and all application forms are available on the CFMS website and you can also call our office with questions.

We are particularly pleased with the Directors and Officers Program that we have been able to negotiate for the Federation and its member organizations. We are also pleased with the participation level we have seen. It is a good beginning for a strong and stable program.

We are also pleased to announce that we will be able to continue to add clubs to the D&O program after the inception date of October 16th. Please feel free to call us for additional details.

Regarding the premises liability, we have found that there is some confusion about just what premises liability is and why it is so important to 'cover this exposure' so I thought I would explore that in today's message.

The concept of premises liability, as opposed to the 'operations' portion of the General Liability, is that it covers liability (legal responsibility) for a premises for which you are responsible by virtue of the fact that you own, rent (or have provided for your use) on an exclusive ongoing basis. If you rent a venue

for an event or once a month for meetings, that would not be considered exclusive use nor ongoing use. If, however, you do have exclusive ongoing use of a space, you can be presumed to have primary oversight of maintenance and management. Legal precedent gives you the primary legal responsibility for any bodily injury at that premises. Since the CFMS General Liability is intended to cover clubs for their normal operations (meetings, field trips, etc.) and assumes that clubs do not have any 'premises exposure', coverage for premises liability can only be obtained by scheduling the location on the policy. Please give me a call if you would like to discuss this further.

Another concern I have been hearing concerns pricing. Of course, prices are up everywhere, especially in insurance. The impacts of national disasters on reinsurers are passed on to everyone who purchases any insurance. The amount of insurance available in the world has decreased relative to the demand for insurance. Insurance companies may compete for the very lowest risk clients but they will look to all other clients to 'help them raise their reserves' (translate that as 'pay higher prices'). One of the big advantages of a statewide program such as the one that CFMS has, is the pricing. If a club were to try to obtain comparable coverage on its own 'stand alone' policy, they would find premiums starting at about \$1200 for a club without a premises or special events or property coverage.

CFMS Election of Officers

CFMS elections will be held at the Nov. 12 CFMS business meeting in Visalia. Our Federation Director, Loretta Ogden, will attend on our behalf and vote for the CFMS officers for 2006.

The Nominating Committee has received the following nominations:

1st VP — **Richard Pankey** — Contra Costa
Mineral & Gem Society

2nd VP — **Bural LaRue** — Valley Prospectors
Secretary — **Fred Ott** — El Dorado Gem &
Mineral Society

Treasurer — **CJ Quitoriano** — Palmdale Gem
& Mineral Society

Back to School: Connecting with Young Minds

*by Jim Brace - Thompson, Juniors Activities
Chairman*

With a new school year now underway, does your club or society have an outreach program that sends members into the classroom to spread the word about our hobby and the earth sciences to eager young faces and minds? If not, the latest (November) issue of Rock & Gem magazine provides a terrific article by Larry G. Field that can get you started. Larry has a lifetime of experience that he's shared in classrooms with school kids since the late 1960s. In his article, he brings this vast experience to bear in leading you step-by-step through the whole process, from how to make an initial contact at a school, to preparing for a talk, to the actual presentation and follow-up.

Larry's suggestions include straightforward, common sense tips and how to convert that common sense into educationally charged pedagogy that will be valued and sought after by teachers seeking to enliven their classrooms with a guest speaker. I especially like his advice to involve the teacher in the planning and outlining of your presentation to ensure it incorporates elements from the state curriculum so that you provide a talk with true educational value, not just entertainment for a diverting morning or afternoon hour. He also provides invaluable advice on how to organize and then save programs to tailor them for future presentations rather than having to start from scratch each time.

I also appreciate his advice to involve the audience with a true conversation and questions and with captivating demonstrations that bring in student assistants rather than a straight, stiff and formal lecture. To motivate students to volunteer to assist in a demo or to raise questions, Larry gives gifts as rewards, such as tumble-polished semi-precious stones, fossils, crystals, etc., all "gift-wrapped" in newspaper to arouse curiosity and attention as each item is unwrapped. As a "take-away" gift that will provide

educational value long after he leaves the classroom, Larry provides resource collections to teacher and students alike, with 12 pieces in each collection. He provides terrific advice on how to economically build and store the many specimens needed for such collections.

If you don't subscribe to Rock & Gem but are interested in engaging in educational outreach, I encourage you to buy a copy of the November issue from the newsstand or borrow one from a friend. In it, you'll find that Larry G. Field knows how to educate young minds while-as always-having fun!

Nominate Your Officers for 2006

by the Nominating Committee

Loretta Ogden - Chair
Don Eschbach
Kathy Eschback
Ofelia Warthen
Floyd Allen

The Nomination Committee officers nominations for 2006 are:

2nd VP - Don Eschbach
Secretary - Pat Felix
Director - Ofelia Warthen
Director - Floyd Allen

There will be nominations from the floor at the November business meeting.

Voting shall be by secret ballot at the November business meeting.

Each of the above nominations is for a two-year term.

In November of 2006, we will need to nominate a President, Treasurer, and 3 Directors.

How We Doubled Our Profit and Made New Friends

by Loretta Ogden

In searching for a way to really get the public's attention on our club we decided to do several things.

1. Teach several days at a city sponsored summer day camp.

a. By doing this we developed a relationship with different city service people. We donated the proceeds of our raffle to the city's youth group and in turn we were given exclusive use of our beautiful new community center for the weekend. We also let the Band Boosters take over the food venue. This brought us many willing, young strong backs to help us move, lift, lug and haul. They also enjoyed the show and did their share of shopping.

b. We more than doubled the number of our dealers and in doing that we increased our income. This was very impressive to the returning guests and everyone enjoyed the variety of merchandise.

c. We advertised a youth section and had local Archaeology and Paleontology groups with activities for the guests to participate in. Members painted faces, made bracelets, carved names on rocks and showed the cabbing process throughout the two days.

d. We gave up our Krafty Korner and sold plants alone. Once again double the profit.

2. We joined the Chamber of Commerce in the city where we have our show.

a. We attend Chamber functions.

b. We donated door prizes for Chamber events.

c. This put us in touch with the local merchants and they were generous in donating prizes for our raffle.

d. We also feel this helped to bring in guests with money in their pockets. We can never have too many of those guests.

We of course did all the things we have always done such as stringing the banner across the road for two weeks before and during the show.

Our flyers have always held an important place and this time we owe the city a big thanks for printing them. We distributed flyers to libraries, local shops, museums, Doctors and Dentists offices, beauty salons, gyms, gem shows, and anywhere you are allowed to put them. I have a pattern for boxes to display flyers that I can share.

We placed a stack of cards on the food tables with information about our club (meetings, field trips, newsletter and classes). If you are interested in how we made the cards and display boxes, contact me:

Loretta Ogden
(909) 598-2456
donogden@aol.com

NOC Shop

by Loretta Ogden

With my sincere desire to have a NOC shop, I have underestimated the busyness of the fall/winter season. I have come to the realization that it will be impossible to start this endeavor until January 2006. I hope you are not too disappointed but at least it is a great way to start out the year.

We are planning an open house to check out our facilities on Tuesday January 3, 2006 from 6:30 to 9:30 p.m. We will be serving a traditional New Mexico fare - so don't be shy and come to see the NOC shop hungry. A map to our house will be available at the December Holiday Party and meeting.

The NOC shop will open for use on Tuesday the 17th of January at 6:30 p.m.

Future Rockhounds of America

North Orange County Gem & Mineral Society

1. The Future Rock Hounds of America will be set up as a junior division of the North Orange County Gem & Mineral Society (NOC) in association with the American Federation of Mineralogical Societies/Future Rock Hounds of America Merit Badge Program.
 - a. The President shall appoint a “Youth Chairperson” to head up the Junior Division.
2. All children up to age 18 from the city of La Habra and surrounding areas shall be eligible to join.
3. Meeting and educational classes shall be held once a month at a designated place and time.
 - a. Additional meeting may be scheduled for planning and organizing activities.
4. A council of an adult steering counsel will be organized from club members (NOC), Parents of the children and city representatives to supervise and organize activities.
 - a. Meetings of the steering counsel will be scheduled as needed.
5. The cost to the children to join the club shall be \$7.00 per year; there may be minimal cost to cover supplies.
6. Adults are encouraged to join the NOC but are not required to do so. The cost of membership in the NOC is:
 - a. Individual Membership dues shall be \$15.00 per year. Initiation fee \$5.00.
 - b. Family Membership dues shall be \$20.00 per year. Initiation fee \$10.00.
 - c. Student Membership dues shall be \$10.00 per year. Initiation fee \$5.00. A student shall be defined as an Individual Member 8 to 25 years of age who is currently attending school.

Restfully submitted by
Don Warthen
Izzie Burns
Janis Logsdon
Youth Organizing Committee.

(Endnotes)

The \$7.00 fee per child will be waived for any family with a family membership.