

NOC NEWS

NORTH ORANGE COUNTY GEM AND MINERAL SOCIETY, INC.

ALL AMERICAN CLUB
1985, 1986, 1988, 1989, 1990, 1992

A member of the
AMERICAN FEDERATION OF MINERALOGICAL SOCIETIES
CALIFORNIA FEDERATION OF MINERALOGICAL SOCIETIES

Meetings

Day and Location:

With the exception of July, August and December, meetings are held at 7:30 p.m. the second Tuesday of the month at the La Habra Community Center, 101 W. La Habra Blvd., La Habra.

The La Habra Community Center is located west of Euclid on La Habra Blvd.

For current meeting information, please call (909) 598-2456

North Orange County Gem & Mineral Society, Inc.
Box 653
La Habra, CA 90633-0653



<http://home.inreach.com/o-nocgms>
<http://www.cfmsinc.org>

DATED MATERIAL - DO NOT DELAY
May 2004

NORTH ORANGE COUNTY GEM AND MINERAL SOCIETY, INC.

*P.O. Box 653
La Habra, California*

Regular meetings are held the second Tuesday of each month (excluding July, August and December) at the La Habra Community Center, 101 W. La Habra Blvd., La Habra (west of Euclid).

2004 OFFICERS

President	Don Warthen	(626) 330-8974
First Vice President	Isabella Burns	(626) 288-2896
Second Vice President	Pat Felix	(714) 970-1496
Secretary	Susan Hansen	(562) 865-2040
Treasurer	Don Livezey	(714) 524-6280
Federation Director	Loretta Ogden	(909) 598-2456
Director	Virginia Grafton	(562) 865-2040
Director	Nancy Bird	(562) 947-6845
Director	Angie Harwood	(562) 692-4540
Director	Ofelia Warthen	(626) 330-8974
Director	Bill Burns	(626) 288-2896

2004 COMMITTEE CHAIRPERSONS

Operating Supplies	Virginia Grafton	see above
Budget & Finance	Don Livezey	(714) 524-6280
Bulletin Editors	Don & Loretta Ogden	see above
Displays & Education	Virginia Grafton	(562) 865-2040
Door Prizes	Verle Stadel	(562) 696-1677
Field Trips	Don Eschbach	(562) 943-8736
Historian	Susan Hansen	see above
Hospitality & Membership	Pat Felix	(714) 970-1496
Insurance	Don Livezey	(714) 524-6280
Librarian	Pat Felix	see above
Operating Regulations & By-Laws	Don Warthen	see above
Programs	Isabella Burns	see above
Publicity	Jane Hendrixon	(562) 691-9595
Refreshments	Nancy Bird	(562) 947-6896
Show Chairmen 2004	Ofelia Warthen	see above
Assistant Show Chairman	The entire club	

The objective and purpose of the North Orange County Gem and Mineral Society is to disseminate knowledge of mineralogy and the earth sciences and to encourage study in these subjects through means of: the presentation of public exhibitions, lectures, slide programs; field trips for explorations, study and collection of specimens; the preparation, publication and distribution of articles and studies pertaining to mineralogy and the earth sciences; the promotion of scientific research in these fields; the encouragement of interest among young people and the fostering of classes in mineralogy and lapidary arts; and all other means which are appropriate to the accomplishment of the primary objectives set forth.

*Annual Membership Dues: Individual, \$10; Family, \$15; Juniors, \$3.
Visitors are always welcome at our regular meetings and field trips.
The North Orange County Gem & Mineral Soc. does not yet have a Junior Division.
Material contained in this newsletter may be used if credit is given.*

Please send exchange bulletins to:

Don & Loretta Ogden, Co-Editors
NOC Gem & Mineral Society, Inc.
20904 Trigger Ln.
Diamond Bar, CA 91765
909-598-2456
donogden@aol.com
<http://www.cfmsinc.org>

NOC GEM & MINERAL SOCIETY NEWS

Vol, 23 No. 5

May 2004

President's Message

by Don Warthen

It's almost show time!!! This will be the second show at the new location and with Everybody helping, it will be a very exciting show! We will have the worlds largest petrified wood collection presented by the renowned wood expert, Walt Wright! We will also be having the "computer controlled" car "Bob" from Cal Poly on display in the parking lot.

We have plenty of activities coming up this summer. After the show we will have a Jade Seminar presented by Francis Lau, followed by a beading class on July 10th. Then we will be helping the kids at the La Habra Day Camp. After this busy schedule, I think we will all be ready for a summer vacation. Please call me if you have any more ideas or suggestion.

Don't forget the meeting starts at **7:00 PM** on Tuesday, May 11th.

Nursery Pots

Nancy Bird needs pots for the show. Clay or plastic, 4 inch to 1 gallon.

Thanks Nancy

Refreshments

by Nancy Bird

Don and Ofelia Warthen will bring the goodies for the May meeting. Thanks to Don and Kathy Eschbach for bringing the goodies to the April meeting.

NOC Club Activities

Cab Classes — To be determined
Board Meeting — To be announced
Field Trip — To be announced
Deadline for NOC News — May 17.
Show — June 21-22
Jade Seminar — To be announced
Walt Wright Bus Trip — June ??
Beading Class — July 10
La Habra Day Camp — To be announced

May Meeting

Date: May 11
Time: 7:00 p.m.
Place: La Habra Community Center
101 W. La Habra Blvd.
Program: Our May meeting will be the Speaker from the Hemalaya Turquoise mine which is located near Baker, CA

Members in the News

HAPPY BIRTHDAY and have a wonderful day all of you who were born in May.

Lucille Howe - May 7
Isabella Burns - May 23
Mary Maneth - May 25
Mark Sumrow - May 26
Bill Burns - May 28

Your gemstone is Emerald.
Your flower is Lily of the Valley or Hawthorn.

Shows and Events

via CFMS Web Page

May 1-2 2004, Anaheim, CA

Searchers Gem & Mineral Society
48th Annual Gem, Mineral, and Jewelry Show
Brookhurst Community Center
2271 W. Crescent Ave.

Hours: Sat 10 - 5 Sun. 10 - 4:30

Karen Fox (714) 832-3580

the_rox_fox@yahoo.com

May 15-16, 2004, Yucaipa, CA

Yucaipa Gem & Mineral Society
Yucaipa Community Center

Hours: 10-5 both days

Lee Peterson (909) 794-0731

Email: rea09ayd@verizon.net

May 28-30, 2004, Mariposa, CA

CFMS & Mariposa Mineral & Gem Show

Mariposa County Fairgrounds
One hour from Yosemite Park
CA State Mining and Mineral Museum
209) 742-7625

June 5-6 2004, Glendora, CA

Glendora Gems
Goddard Middle School
859 E. Sierra Madre

Hours: Sat. 10 - 5; Sun. 10 - 4

Mark Thompson (626) 335-3814

June 19-20, 2004, La Habra, CA

NOC Gem & Mineral Society

Jubilee of Gems

La Habra Community Center
101 W. La Habra Blvd.

Hours: Sat 10-5 sun 10-4

Ofelia Warthen (626) 330-8974

E-mail: warthen@earthlink.net

Oct 22-24 2004, Riverside, CA

Valley Prospectors of San Bernardino
Rancho Jurupa Park;
4800 Crestmore

Hours: Sat. 9-5; Sun. 9-4

Alice Corey (909) 864-8320

Email: ALPENNYMAE@AOL.COM

Nov 13-14 2004, Palmdale, CA

Palmdale Gem & Mineral Club

Palmdale Elks Lodge

2705 East Ave. Q

Hours: Sat. 9-5; Sun. 9-4

Gail Becker (661) 285-3958

Mariposa Show Update

by Peggy Ronning, Mariposa Club, Show Chairman

The 2004 CFMS and Mariposa Mineral and Gem Show is almost here. It's time to get your pre-registration for passes, banquet tickets, and editor's breakfast tickets sent in. Are you planning to share your mineral treasures as a guest or competitive exhibitor? If so, don't forget to turn in your exhibitor application so we can reserve a space for you!

Mariposa is a popular destination on Memorial Day weekend, so if you're planning to stay in a motel, it's time to reserve your room. A list of hotels and bed & breakfasts is available with the show forms on the CFMS website. If you are planning to camp at the fairgrounds, camping will be first come first served (no reservations), but don't worry, there is space for 100 campers. The fairgrounds staff says they can provide power to all campers. The fairgrounds also has bathrooms, showers, and a pump station.

We are looking forward to exhibits of lapidary art, minerals from as near as Butte and Inyo Counties and as far as Australia, and fluorescent minerals. We will have vendors for every interest, selling lapidary equipment, beads, rough and finished stones, mineral specimens, fluorescent minerals, gold specimens, jewelry, and more.

See you at the Goldbug Gala, May 28-30 at the Mariposa County Fairgrounds!

Peggy Ronning
Mariposa Club Show Chairman
California State Mining & Mineral Museum,
(209) 742-7625, Monday - Friday, 7 a.m. to 4 p.m.,
PO Box 1192, Mariposa, CA 95338
mineralcurator@sierratel.com

Retaining New Members

by Bill Smith, AFMS President Elect
via AFMS Newsletter, May 2004

I don't think there is anything more discouraging than to have new members join your club and then not have them renew. Several years ago Janet and I were the membership committee for our local club. At the end of the year we had new members that did not renew their membership. I called each member or couple and asked them why. Most often I got the answer, it wasn't what we were looking for. I would counter with, what were you looking for? Usually got another vague answer so just got to the point. I would say, we are trying to improve the way our club operates and did you have a problem with how the meetings were conducted? Most often the general answer would be, the meetings are too long, boring and contained little substance. I then monitored a couple of meetings and observed the following and will also include what the club did to improve.

1. Some verbal committee reports were *very* long hard to understand, and contained little information for a newcomer. The club implemented the policy of printing all committee reports in the club newsletter. Example: The field trip chairperson would include a detailed report of the upcoming field trip. At the meeting he would have extra copies of the report along side the field trip sign-up sheet. When it was his turn to report he would just say the next field trip information was in the newsletter and extra copies are with the sign-up sheet in the back. Any questions see me at the break.

2. For correspondence, mention what it is and that it is at the front table and if interested come up and read it during the break. If it is important enough to read at the meeting then it is important enough to print in the newsletter.

3. The display table was often lacking and some members would spend considerable time talking about the common rocks *they* found, food they had, where they stayed, etc on their last field trip. The display chairman took the following action: He would contact at least one person with nice material and have them

display at the next meeting. For example, if the display table was opal he would contact someone with a nice opal display. He also asked those that were long winded to do a write-up of field trips for the newsletter. Would make interesting reading over a cup of coffee in the morning and asked them to try to keep comments at the display table short because of time constraints.

4. When the president announces a break for refreshments for 15 minutes and then will have the program he should mean 15 minutes. A 45 minute break cuts into 30 minutes of your program.

5. If you have streamlined your meeting, you should now have about an hour for the program. Over an hour and members will get up and walk out.

6. Try to cover as much business as possible at your monthly board meetings. At least the officers and committee members will know what is going on when it is brought up at the meeting which could save considerable time.

7. With the constant turn over of officers and committee personnel it can be difficult to keep *your* meetings streamlined, therefore have someone appointed to monitor the meetings.

Meaningful meetings are just one step in keeping new members but a very important one. Good luck in building your membership.

NOC News Brief

by Don Warthen

The following will receive the NOC newsletter.

James Gomez
Council Member, City of La Habra
P.O. Box 337
201 E. La Habra Blvd.
La Habra, CA 90633

David Varnam
District Representative
Rep. Gary Miller, 42nd District
1800 East Lambert Rd. # 150
Brea, CA 92821

The Art of Display

by June Culp Zeitner
via AFMS Newsletter, May 2004

June Culp Zeitner, well known author, collector and recipient of the first AFMS Recognition Award, has written many articles during her career. Many readers will know her from articles which appeared for years in Lapidary Journal and more recently in Rock & Gem Magazine.

This article, written in 1971 and most recently reprinted in Pickin's & Diggin's, newsletter of the Williamson Co. Gem & Mineral Society (George-town, TX), this article is still as valid today as it was when written.

To show off minerals and gems one need only learn and apply a few rules of art. Some are so elementary that most pebble-pups as well as advanced rockhounds know them, nevertheless, they are all important.

CLEANLINESS:

A dusty or finger printed specimen or case detracts from any display.

ARRANGEMENT:

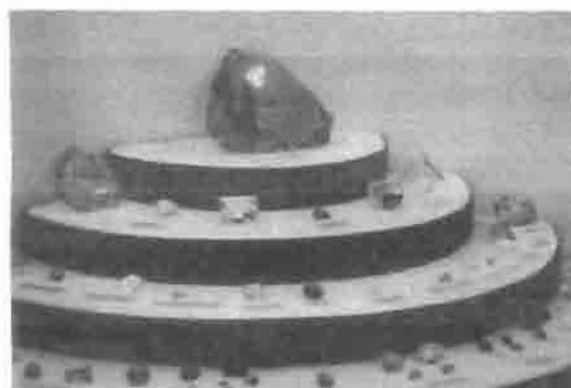
A pleasing arrangement has balance, good proportion, pleasing color harmony, rhythm, design and suitable background. Generally speaking there are two types of balance in art, formal and informal. If you can draw a line through the center of a design and find that each half is a mirror image of the other, that design is formal. If the two halves are not the same, the balance is informal. An old fashioned garnet brooch is usually formal in design. A modern free form brooch set with a garnet baroque would probably be informal in balance.

Formal balance is well suited to arrange cabochons for display. A group of slabs of dissimilar sizes and shapes lend themselves to informal balance. Why strive for balance? We want to show it off to the best advantage.

Just as we would never lay a "picture agate" upside down so we would not lay it in a row with bigger or brighter stones.

Trained to take in things at a quick glance our eyes naturally seek the center of interest. If you have any prized specimens which you are anxious to show off, give them plenty of space. Overcrowding is a sin of which most of us are guilty.

According to the strict rules of art, a display should have most of its weight toward the bottom. This means



apparent weight rather than actual weight. A good display can't have the most massive or the brightest pieces at the top. It would appear too heavy. The eye is upset at seeing a display with a high center of gravity which looks as if it would topple over. In a display all on one level the larger items naturally go to the background, the more spectacular specimens toward the center and the smaller items in the foreground.

Every good display, like every good picture, should have margins. The rules governing margins in art call for the widest-at the bottom, the second at the top and the two sides either equal to, or a little narrower than the top.

Remember that bright colors strike the eye before dull colors. They tend to come forward. They can be used in smaller amounts and still attract attention. The placing of bright colors must be watched carefully. For example if, you placed a slab of electric blue chrysocolla in each corner of your show case they would tend to draw the eyes in four directions at once. Whatever you had planned for the center of interest in the middle of the

case would be lost. Bright colors placed in a hit or miss manner spoil any feeling of balance and rhythm by causing the eye to jump.

One large specimen can be balanced by a group of smaller ones. One bright specimen can be balanced by several duller ones. The subject of color is important to rockhounds and we should know and understand the color wheel, the primary, secondary and tertiary colors and the basic color harmonies. A very bright color should be used in smaller amounts than muted shades or tints. The center of interest of any arrangement should be toward the center where the eye naturally falls first. If too many bright colors other than the center of interest are used the result is a "busy" or jumpy arrangement.

It is definitely worth the effort in arranging a gem or mineral display to carefully consider the color of every piece before deciding where to place it. The artful use of color can make an average collection spectacular, while the poor use of color will make a superb collection seem like a dull jumble.

BACKGROUND:

In the successful display of gems the background against which the gems are placed should be in keeping with the value of the gems. It should not detract from the color of your gems but should flatter every stone in the display. Tweed or calico would not be used to set off a faceted collection. Velvets, velours, silks and satins are more appropriate. However, as beautiful as red velvet is it would not be an appropriate background because red is a detracting color. After much experimenting, we have found that a pale blue satin, a grey tone of blue, is the most versatile of background material for mineral display. There is just enough color in this to set off tints as well as shades. Another wonderful background for gems or jewelry is the use of mirrors. A sparkling mirror multiplies the beauty of your gems.

Snowy white styrofoam is another suitable background. It can be cut in various shapes to enhance the beauty of a specimen and is useful in creating split levels of display. A specimen can also be made to stand in the precise position it looks best. Besides the ordinary background material many rockhounds with imagination

use other devices to add interest. A piece of silvery driftwood against a sea-blue drop may be used to set off a collection of beach agates. A piece of ibduan pottery add interest to a turquoise display. Under no circumstances should the background be so big, bright or unusual that it detracts from the real purpose of the exhibit



LIGHTING:

Good lighting is essential. Scenic agate slabs are best viewed with a light behind them. Spot lights are suitable for large spectacular pieces, but in most cases tube lights directly above or inside each display case are best. Natural light is a big help for home display. A big north or south window opposite your display give a good light.

FLAIR:

For want of a better word I use flair to describe that something extra which the personality of the rockhound stamps on his display. A beginning artist should learn the rules of art, however, we all know artists who have broken rules and come out on top. Not all great gem displays follow the artists display rules, but you should learn the rules first before you build up enough faith in your flair to learn when it is right to break a rule or two if gem dealers and collectors would think of themselves more often as artists, many shops and collectors would greatly be enriched with very little expenditure. Display cases are not hard to build. With a little effort every hidden box of specimens could graduate into a real artistic display.

Rail Safety Tips

*by Chuck McKie, CFMS Safety Chairman 2004
via city of Fairfield Observer Newsletter 09/2002*

The number of incidents involving trains with cars and pedestrians has increased dramatically. California leads the nation in rail-related injuries and deaths. Last year 127 Californians lost their lives trespassing on railroad right of-ways or at highway/rail crossings. Unfortunately, during the past year, there have been victims in Fairfield/Suisun who have been harmed or killed by a train.

These incidents are preventable, by following some simple rules:

- Always expect a train on any track, at any time and going any direction, because non-passenger trains do not maintain a regular schedule. Remember tracks do not have traffic directions like roads.
- Do not walk on or near train tracks, they are private property. More importantly, trains are very quiet as they approach, can overhang the tracks by 3 feet on either side and cannot swerve to avoid persons on or near the tracks. A train traveling at 50 mph can take as much as 1.5 miles to stop.
- Cross tracks at a designated pedestrian or roadway crossing. Observe and obey all warning signs or signals.
- Do not cross tracks immediately after a train passes. Trains can come from either direction. A second train may be blocked from view by the first. Wait until you can see clearly around the first train in both directions.
- Never drive around down crossing gates. If you think the gates are malfunctioning, call the phone number on the crossing signal or local law enforcement.
- Immediately get out of a vehicle that stalls or becomes hung up on tracks and move away. If a train is coming, move away in the direction of the train to avoid being struck by debris when the train hits the vehicle. In either case, call local law enforcement immediately.

For more information on rail safety, please contact :

Operation Lifesaver at 530-367-3918 or
visit <http://www.oli.org>

Sunrise at ZZYZX

April 14, 2004

by Joan Abramson

No mighty trumpets sounded
For the sunrise I beheld.
The heavy clouds held captive
The fragile light that dwelled.

Then fingers of pink pastelite
Pushed through the darkened pall.
Like sagenite, a burst of color
Radiated all.

Dainty shades of opalite
Became the heaven's broom
And salmon-tinted soapstone
Washed out oppressive gloom.

The dawn's bright energy erupted.
Soon the glory faded.
A magic moment blessed my eyes,
By nature's gemstones aided.

La Habra Chamber of Commerce

by Don Warthen

The La Habra Chamber of Commerce will be hosting fund-raiser at Senor Campos 1220 W. Whittier Blvd. many of the city officials such as the Mayor and Council members serving the tables.

The dinner is on Tuesday May 11th (our regular meeting night) from 5 to 8 p.m. If you are interested in attending call the chamber office (562) 697-1704, to make reservations, tell them that you are with the NOC Gem & Mineral Society and will need to get in early so you can attend our meeting at 7 pm.